



2018 RETAIL BROCHURE

"ALL THINGS OUTDOORS"





Our story began in 1999. Caravan® Global, Inc. started manufacturing instant canopies and outdoor leisure products based on three values: durability, portability, and ease of use.

Today, Caravan® Global, Inc. continues to actively reinforce these values in every product we design, engineer, and manufacture. Through durable, portable, and easy to use products, our ultimate goal is to enhance the lives of our customers by providing comfort and convenience. When you purchase a Caravan® product, you are guaranteed the highest quality products manufactured by a motivated and knowledgeable organization dedicated to being the best. In addition to outdoor leisure products, Caravan® also maintains a full-service custom graphics department that offers a wide variety of custom shelters and promotional tools, creating an ideal advertising tool.

Caravan® Global, Inc. continues to be a leading manufacturer of outdoor merchandise, providing consumers with the products they desire through functional and innovative designs. Our commitment to service and timely delivery makes us the preferred manufacturer for outdoor products.



4 | Sport Shelter



5 | EvoShade™



10 | ArchBreeze



11 | Haven



16 | Garden Shade™ & Screen House



17 | Infinity Zero Gravity Chair



22 | Compact Chair



23 | Elite Quad Chair



6 | V-Series™ 2



7 | V-Series™ 2 Pro



8 | V-Series™ 2 Pro Camo



9 | M-Series™ 2 Pro



12 | TitanShade™



13 | AlumaShade®



14 | Domain™



15 | Mega Domain™



18 | Infinity Oversized Zero Gravity Chair & Love Seat



19 | Infinity Suspension Chair



20 | Infinity Textilene Table



21 | Infinity Sun Chair



24 | Stadium Seats



25 | PupUp™ & Disc Fan Light



26 | Canopy Sidewalls & Weight Plates



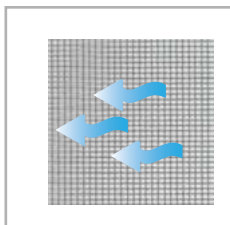
27 | Domain™ Sidewall Enclosure Kits



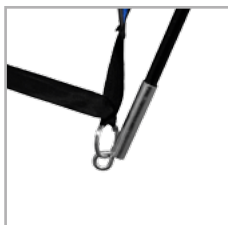
Lightweight, convenient, and compact. A sport shade with 5' 7" of headroom at only 4.2 lbs.



TIE DOWN SUPPORTS



MESH FOR AIR FLOW



HIGH STRENGTH STEEL TO
SUPPORT TENSION



EASY CLIP-ONS



OPEN FLOOR

Feature Specs

| | |
|------------------|---------------------|
| ASSEMBLED SIZE | 9' x 6' x 5' 7" |
| SQ. FT. SHADE | 54 SQ. FT. |
| MAX VALANCE | 5' 7" |
| FOLDED SIZE | 24.8" x 4.3" x 4.3" |
| FRAME MATERIAL | FIBER GLASS |
| WARRANTY | 60 DAYS |
| CONTAINER 40' HC | 7020 |
| FOB CHINA | \$ |
| FOB CA | \$ |

Colors Available



BLUE / MESH



RED / MESH

Packaging



CARRY BAG



LITHO BOX

Includes



UV
PROTECTION



FIRE
RETARDANT



WATER
RESISTANT



LIGHT
WEIGHT



NO TOOLS
REQUIRED



MILDEW
RESISTANT



STAKE KIT



FIBERGLASS POLES

EVO SHADE

An edgy, angular design created for versatility and a single person set-up.



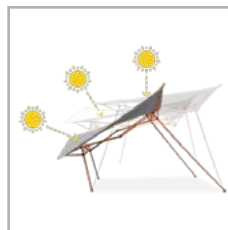
GRIP LEVER
for easy set-up



BALL SOCKET FOOTPAD
rotates to any position



MULTIPLE HEIGHT SETTINGS



BLOCK THE SUN
FROM ANY ANGLE



EASY ONE TIME TOP
SET UP

Feature Specs

| | |
|----------------|-----------------------|
| ASSEMBLED SIZE | 8' x 8' |
| LEG TYPE | SLANT LEG |
| SHADED AREA | 64 SQ. FT. |
| FRAME FINISH | POWDERED-COATED STEEL |
| WARRANTY | 2 YEAR |
| PEAK HEIGHT | 7' 9" |
| 40' HC | 2016 PCS |
| CONTAINER | 2016 |
| FOB CHINA | \$ |
| FOB CA | \$ |

Colors Available



WHITE FRAME / BLUE TOP



ORANGE FRAME / GREY TOP

Packaging



CARRY BAG WITH LABEL

Includes



SAND BAGS (4 PCS)



STAKE KIT



TOP & FRAME



UV
PROTECTION



FIRE
RETARDANT



WATER
RESISTANT



1 PERSON
ASSEMBLY



LIGHT
WEIGHT

V-SERIES™ 2

Entry level, angled leg economical canopy with upgraded features.



3 HEIGHT SETTINGS



LARGER STEEL FOOTPAD



SOFT PRESS SLIDER BRACKET



RIVETED JOINTS
parts are replaceable



CATHEDRAL FRAME
for extra headroom

Feature Specs

| | |
|-----------------------|-------------------------|
| ASSEMBLED SIZE | 10' x 10' 12' x 12' |
| LEG TYPE | SLANT LEG |
| SHADED AREA | 64 SQ. FT. 81 SQ. FT. |
| FRAME TYPE | CATHEDRAL |
| FRAME FINISH | POWDER-COATED STEEL |
| WARRANTY | 2 YEAR |
| PEAK HEIGHT | 8' 7" 9' 1" |
| MAX VALANCE CLEARANCE | 6' 2" 6' 5" |
| QUANTITY PER 40' HQ | 1440 1218 |
| FOB CHINA | \$ |
| FOB CA | \$ |



UV
PROTECTION



FIRE
RETARDANT



WATER
RESISTANT



2 YEAR
WARRANTY



NO TOOLS
REQUIRED

Colors Available



BLUE



WHITE

Packaging Options



CARRYING BAG WITH LABEL

OR



LITHO BOX

Includes



STAKE KIT



TOP & FRAME



CARRY BAG

V-SERIESTM 2 PRO

A straight leg canopy with maximum shade and strength at an economical price.



3 HEIGHT SETTING



LARGER STEEL FOOTPAD



SOFT PRESS SLIDER BRACKET



RIVETED JOINTS
parts are replaceable



CATHEDRAL FRAME
for extra headroom

Feature Specs

| | |
|-----------------------|---------------------|
| ASSEMBLED SIZE | 10' x 10' |
| LEG TYPE | STRAIGHT LEG |
| SHADED AREA | 100 SQ. FT. |
| FRAME TYPE | CATHEDRAL |
| FRAME FINISH | POWDER-COATED STEEL |
| WARRANTY | 2 YEAR |
| PEAK HEIGHT | 9' 2" |
| MAX VALANCE CLEARANCE | 6' 3" |
| QUANTITY PER 40' HQ | 1218 |
| FOB CHINA | \$ |
| FOB CA | \$ |



UV
PROTECTION



FIRE
RETARDANT



WATER
RESISTANT



2 YEAR
WARRANTY



NO TOOLS
REQUIRED

Colors Available



BLUE



WHITE

Packaging Options



ROLLER BAG WITH LABEL

OR



LITHO BOX

Includes



STAKE KIT



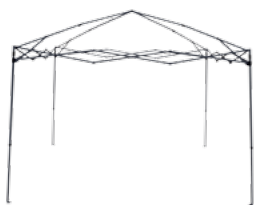
TOP & FRAME



ROLLER BAG

V-SERIESTM 2 PRO CAMOUFLAGE

Designed for a true outdoorsman.
Featuring True Timber camo



3 HEIGHT SETTINGS



LARGER STEEL FOOTPAD



SOFT PRESS SLIDER BRACKET



JOINT, NUT,
WASHER & CAP



GREY POWDER-COATED

Feature Specs

| | |
|-----------------------|---------------------|
| ASSEMBLED SIZE | 10' x 10' |
| LEG TYPE | SLANT LEG |
| SHADED AREA | 100 SQ. FT. |
| FRAME TYPE | CATHEDRAL |
| FRAME FINISH | POWDER-COATED STEEL |
| WARRANTY | 2 YEAR |
| PEAK HEIGHT | 9' 2" |
| MAX VALANCE CLEARANCE | 6' 3" |
| QUANTITY PER 40' HQ | 1218 |
| FOB CHINA | \$ |
| FOB CA | \$ |



UV
PROTECTION



FIRE
RETARDANT



WATER
RESISTANT



2 YEAR
WARRANTY



NO TOOLS
REQUIRED

Colors Available



CAMO

Packaging



ROLLER BAG



LITHO BOX

Includes



STAKE KIT



TOP & FRAME



ROLLER BAG



A step-up unit with a rising truss system for added strength and additional headroom. Commercial grade strength meets recreational grade portability.



3 HEIGHT SETTINGS



WIDE PLASTIC FOOTPAD



ORANGE PULL-PIN
SLIDER BRACKET



JOINT, NUT,
WASHER & CAP



RISING TRUSS
for stability & strength

Feature Specs

| | |
|-----------------------|---------------------------|
| ASSEMBLED SIZE | 10' x 10' 12' x 12' |
| LEG TYPE | STRAIGHT LEG |
| SHADED AREA | 100 SQ. FT. 144 SQ. FT. |
| FRAME TYPE | RISING TRUSS |
| FRAME FINISH | POWDER-COATED STEEL |
| WARRANTY | 2 YEAR |
| PEAK HEIGHT | 10' 5" 9' 9" |
| MAX VALANCE CLEARANCE | 6' 3" 6' 3" |
| QUANTITY PER 40' HQ | 810 |
| FOB CHINA | \$ |
| FOB CA | \$ |



UV
PROTECTION



FIRE
RETARDANT



WATER
RESISTANT



2 YEAR
WARRANTY



NO TOOLS
REQUIRED

Colors Available



WHITE



NAVY BLUE

Packaging Options



ROLLER BAG

OR



LITHO BOX

Includes



STAKE KIT



TOP & FRAME



ROLLER BAG

ArchBreeze

Extra headroom with a mesh venting system allows cooler air in and heat to escape.



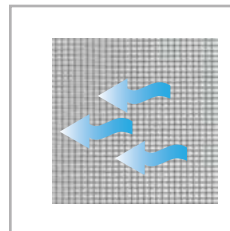
3 HEIGHT SETTINGS



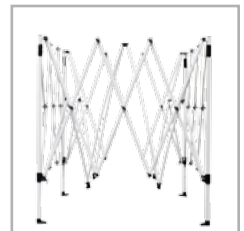
PLASTIC FOOTPAD



GREY PULL-PIN
SLIDER BRACKET



MESH FOR VENTILATION



SETS-UP IN SECONDS

Feature Specs

| | |
|-----------------------|---------------------|
| ASSEMBLED SIZE | 10' x 10' |
| LEG TYPE | STRAIGHT LEG |
| SHADED AREA | 100 SQ. FT. |
| FRAME TYPE | CATHEDRAL |
| FRAME FINISH | POWDER-COATED STEEL |
| WARRANTY | 2 YEAR |
| PEAK HEIGHT | 9' 8" |
| MAX VALANCE CLEARANCE | 6' 5" |
| QUANTITY PER 40' HQ | 1140 |
| FOB CHINA | \$ |
| FOB CA | \$ |



UV
PROTECTION



FIRE
RETARDANT



WATER
RESISTANT



2 YEAR
WARRANTY



NO TOOLS
REQUIRED

Colors Available



WHITE FRAME / BLUE TOP



ORANGE FRAME / GREY TOP

Packaging Options



ROLLER BAG



Includes



STAKE KIT



TOP & FRAME



ROLLER BAG

HAVEN

An aesthetically pleasing canopy that provides consumers a classic gazebo look at an affordable price.



HEAVY DUTY TOP



BIGFOOT
FOOTPAD



BROWN PULL-PIN
SLIDER BRACKET



VENTILATED PEAK
for air flow



EXTENDED EAVE

Feature Specs

| | |
|-----------------------|---------------------|
| ASSEMBLED SIZE | 12' 7" x 12' 7" |
| LEG TYPE | STRAIGHT LEG |
| SHADED AREA | 169 SQ. FT. |
| FRAME TYPE | CATHEDRAL |
| FRAME FINISH | POWDER-COATED STEEL |
| WARRANTY | 2 YEAR |
| PEAK HEIGHT | 8' 6" |
| MAX VALANCE CLEARANCE | 6' 6" |
| QUANTITY PER 40' HQ | 720 |
| FOB CHINA | \$ |
| FOB CA | \$ |

Colors Available



BROWN

Packaging



ROLLER BAG



LITHO BOX

Includes



UV
PROTECTION



FIRE
RETARDANT



WATER
RESISTANT



2 YEAR
WARRANTY



NO TOOLS
REQUIRED



MILDEW
RESISTANT

TITANSHADE™

The TitanShade™ can withstand repeated use due to a full truss system and commercial steel. It is perfect for a street fair vendors, tailgaters, work crews, and small business applications.



10x15



HAMMERTONE
POWDER-COATED



BIGFOOT® FOOTPAD
*reinforced with steel plate for
maximum strength*



5 HEIGHT SETTING



PULL-PIN HEIGHT ADJUSTER



HEAVY DUTY TOP

Feature Specs

| | |
|-----------------------|---------------------------|
| ASSEMBLED SIZE | 10' x 10' 10' x 15' |
| LEG TYPE | STRAIGHT LEG |
| SHADED AREA | 100 SQ. FT. 150 SQ. FT. |
| FRAME TYPE | FULL TRUSS |
| FRAME FINISH | POWDER-COATED STEEL |
| WARRANTY | 2 YEAR |
| PEAK HEIGHT | 11' 11' 2" |
| MAX VALANCE CLEARANCE | 7' 2" 7' 2" |
| CONTAINER | 520/480 |
| FOB CHINA | \$ |
| FOB CA | \$ |



UV
PROTECTION



FIRE
RETARDANT



WATER
RESISTANT



2 YEAR
WARRANTY



COMMERCIAL
GRADE FRAME

Colors Available



WHITE



24 STOCK COLOR OPTIONS

Packaging Options



ROLLER BAG



LITHO BOX

Includes



STAKE KIT



TOP & FRAME



ROLLER BAG

ALUMASHADE® BIGFOOT® DELUXE

A lightweight, professional grade canopy that is ideal for business applications looking for ultimate portability. The AlumaShade® Bigfoot® is resistant to salt air and water corrosion, and comes with a full truss system. Also, includes 4 sidewalls with a middle zipper to provide extra shade, protection and privacy.



ALUMASHADE® FULL
SIDEWALL KIT



ANODIZED ALUMINUM



BIGFOOT® FOOTPAD
*reinforced with steel plate for
maximum strength*



5 HEIGHT SETTING



PULL-PIN HEIGHT ADJUSTER



HEAVY DUTY TOP

Feature Specs

| | |
|-----------------------|-------------------|
| ASSEMBLED SIZE | 10' x 10' |
| LEG TYPE | STRAIGHT LEG |
| SHADED AREA | 100 SQ. FT. |
| FRAME TYPE | FULL TRUSS |
| FRAME FINISH | ANODIZED ALUMINUM |
| WARRANTY | 2 YEAR |
| PEAK HEIGHT | 11' |
| MAX VALANCE CLEARANCE | 7' 2" |
| CONTAINER | 666 |
| FOB CHINA | \$ |
| FOB CA | \$ |

Colors Available



WHITE



24 STOCK COLOR OPTIONS

Packaging Options



ROLLER BAG



LITHO BOX

Includes



STAKE KIT



TOP, FRAME &
SIDEWALL KIT



ROLLER BAG



UV
PROTECTION



FIRE
RETARDANT



WATER
RESISTANT



2 YEAR
WARRANTY



COMMERCIAL
GRADE FRAME



An entry level, economical carport that features a heat-sealed polyethylene top and 1 3/8" diameter legs to withstand outdoor elements.



EASY TO ASSEMBLE
FRAME STRUCTURE



DOUBLE REINFORCED
METAL POLE



STRONG TOP TIE-DOWNS



DOMAIN™ FOOTPAD



FULL SIDEWALLS ENCLOSURE
sold separately

Feature Specs

| | |
|-----------------------|---------------------|
| ASSEMBLED SIZE | 10' x 20' |
| LEG TYPE | STRAIGHT LEG |
| SHADED AREA | 200 SQ. FT. |
| FRAME MATERIAL | STEEL |
| FRAME FINISH | POWDER-COATED STEEL |
| WARRANTY | 1 YEAR |
| PEAK HEIGHT | 8' 9" |
| MAX VALANCE CLEARANCE | 5' 10" |
| QUANTITY PER 40' HQ | 617 |
| FOB CHINA | \$ |
| FOB CA | \$ |

Colors Available



WHITE



Full Sidewall Enclosure Set - SOLD SEPARATELY
Full Sidewall Enclosure Set includes a front wall with dual zippers and roll up door, solid back wall, and solid side walls. All of these are made from 140 g polyethylene.



Concrete Anchor System - SOLD SEPARATELY
Concrete Anchor System includes 6 steel expansion bolts for maximum stability on hard surfaces such as concrete and asphalt.

Includes



STAKE
KIT



TOP &
FRAME



6 DOMAIN
LEGS



LITHO BOX



WATER
RESISTANT



SHADED
AREA



6 LEG
DESIGN



UV
PROTECTION



NO TOOLS
REQUIRED



Mega Domain™ is a commercial strength, heavy-duty carport. A step up from the Domain™, this new model features eight legs that are two inches in diameter.



SNOW LOAD BAR



EASY TO ASSEMBLE FRAME STRUCTURE



TOP TIE DOWNS



MEGA DOMAIN™ FOOTPAD



FULL SIDEWALLS ENCLOSURE
sold separately

Feature Specs

| | |
|-----------------------|---------------------|
| ASSEMBLED SIZE | 10' x 20' |
| LEG TYPE | STRAIGHT LEG |
| SHADED AREA | 200 SQ. FT. |
| FRAME MATERIAL | STEEL |
| FRAME FINISH | POWDER-COATED STEEL |
| WARRANTY | 2 YEAR |
| PEAK HEIGHT | 9' 5" |
| MAX VALANCE CLEARANCE | 6' 8" |
| CONTAINER | 300 |
| FOB CHINA | \$ |
| FOB CA | \$ |

Colors Available



DARK BROWN FRAME / BEIGE TOP



Full Sidewall Enclosure Set - SOLD SEPARATELY
Full Sidewall Enclosure Set includes a front wall with dual zippers and roll up door, solid back wall, and solid side walls. All of these are made from 140 g polyethylene.



Concrete Anchor System - SOLD SEPARATELY
Concrete Anchor System includes 6 steel expansion bolts for maximum stability on hard surfaces such as concrete and asphalt.

Includes



ROPE



LITHO BOX



TOP & FRAME



WATER RESISTANT



SHADED AREA



8 LEG DESIGN



UV PROTECTION



FIRE RETARDANT



COMMERCIAL GRADE FRAME



SNOW LOAD

GARDEN SHADE™

DINING CANOPY



Includes

- SINGLE BAG
- POINT OF PURCHASE BOX



Feature Specs

| | |
|---------------------|-------------------|
| ASSEMBLED SIZE | 9' x 9' |
| SHADED AREA | 81 SQ. FT. |
| FRAME MATERIAL | STEEL FIBER GLASS |
| WARRANTY | 60 DAYS |
| PEAK HEIGHT | 7' 5" |
| QUANTITY PER 40' HQ | 3300 |
| FOB CHINA | \$ |
| FOB CA | \$ |



UV
PROTECTION



FIRE
RETARDANT



WATER
RESISTANT



NO TOOLS
REQUIRED



Includes



CARRYING BAG

Feature Specs

| | |
|---------------------|-----------|
| ASSEMBLED SIZE | 10' x 10' |
| LEG TYPE | SLANT LEG |
| FRAME TYPE | CATHEDRAL |
| POWDER COATING | BLACK |
| WARRANTY | 60 DAYS |
| PEAK HEIGHT | 6' 8" |
| QUANTITY PER 40' HQ | 4800 |
| FOB CHINA | \$ |
| FOB CA | \$ |



INSECT
PROTECTION



1 ZIPPERED
ENTRYWAY



REINFORCED
POLY TAFFETA FRAMING

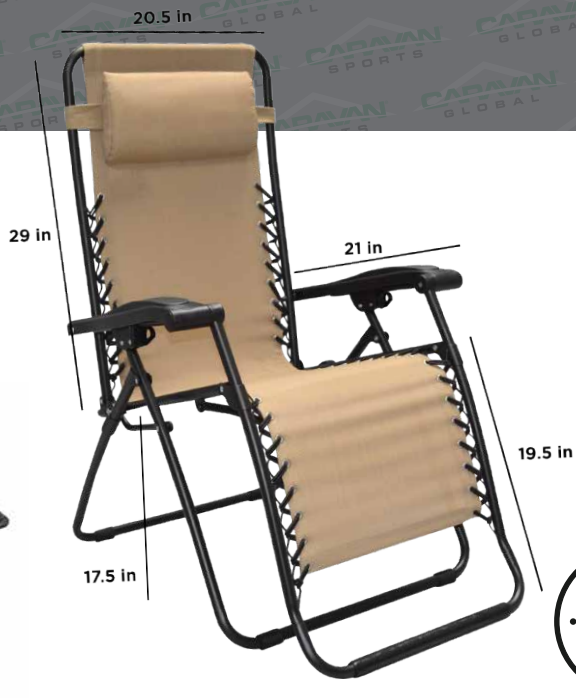


NO TOOLS
REQUIRED

INFINITY

ZERO GRAVITY CHAIR

High strength steel frame and long lasting outdoor fabric that comfortably supports up to 300 Lbs.



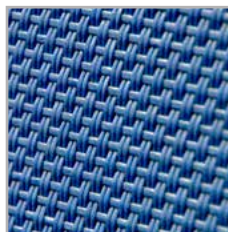
GRIP LEVER



ADJUSTABLE PILLOW



DOUBLE BUNGEE SUPPORT



2x1 TEXTILENE
for outdoor usage

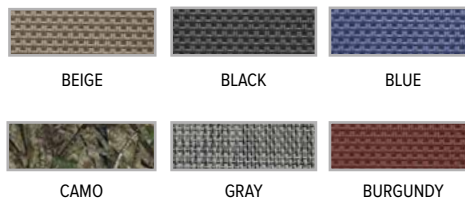


FOLDED VIEW

Feature Specs

| | |
|---------------------|-------------------------|
| ASSEMBLED SIZE | 25.5" x 45" x 64.5" |
| PACK | SINGLE (1) DOUBLE (2) |
| FRAME TYPE | STEEL |
| FRAME FINISH | BLACK COATING |
| SEAT TUBE DIAMETER | 22 mm x 0.9 mm |
| FABRIC | 600 G TEXTILENE (2:1) |
| FOLDED SIZE | 38.6" x 26.4" x 6.3" |
| WARRANTY | 60 DAYS |
| QUANTITY PER 40' HQ | 720 792 |
| FOB CHINA | \$ |
| FOB CA | \$ |

Colors Available



INFINITY

OVERSIZED

ZERO GRAVITY CHAIR



GRIP LEVER



ADJUSTABLE PILLOW



DOUBLE BUNGEE SUPPORT

Feature Specs

| | |
|---------------------|-----------------------|
| ASSEMBLED SIZE | 31" x 45" x 64.5" |
| PACK | SINGLE (1) |
| FRAME TYPE | STEEL |
| FRAME FINISH | BLACK COATING |
| SEAT TUBE DIAMETER | 22 mm x 1.2 mm |
| FABRIC | 750 G TEXTILENE (2:1) |
| FOLDED SIZE | 38.6" x 31.7" x 6" |
| WARRANTY | 60 DAYS |
| QUANTITY PER 40' HQ | 532 |
| FOB CHINA | \$ |
| FOB CA | \$ |

Colors Available



INFINITY

LOVESEAT

ZERO GRAVITY CHAIR



GRIP LEVER



DOUBLE PILLOW

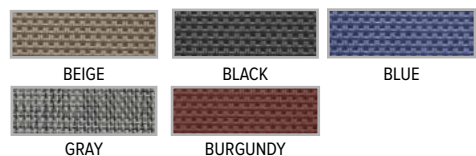


2 x 1 TEXTILENE
for outdoor usage

Feature Specs

| | |
|---------------------|-----------------------|
| ASSEMBLED SIZE | 42" x 40" x 40.5" |
| PACK | SINGLE |
| FRAME TYPE | STEEL |
| FRAME FINISH | BLACK COATING |
| SEAT TUBE DIAMETER | 22 mm x 1.2 mm |
| FABRIC | 720 G TEXTILENE (2:1) |
| FOLDED SIZE | 42" x 34.5" x 4.5" |
| QUANTITY PER 40' HQ | 428 |
| FOB CHINA | \$ |
| FOB CA | \$ |

Colors Available



INFINITY

SUSPENSION FOLDING CHAIR



EASILY FOLDS DOWN



DOUBLE BUNGEE SUPPORT



2 x 1 TEXTILENE
for outdoor usage

Feature Specs

| | |
|---------------------|-----------------------|
| ASSEMBLED SIZE | 23.5" x 34.5" x 25.8" |
| PACK | FOUR (4) |
| FRAME TYPE | STEEL |
| FRAME FINISH | BLACK COATING |
| SEAT TUBE DIAMETER | 22mm x 0.8mm |
| FABRIC | TEXTILENE (2:1) |
| FOLDED SIZE | 23.5" x 34.5" x 4.75" |
| WARRANTY | 60 DAYS |
| QUANTITY PER 40' HQ | 984 |
| FOB CHINA | \$ |
| FOB CA | \$ |

Colors Available



INFINITY

OVERSIZED ZERO GRAVITY CHAIR



INTEGRATED CUP HOLDER



DOUBLE BUNGEE SUPPORT

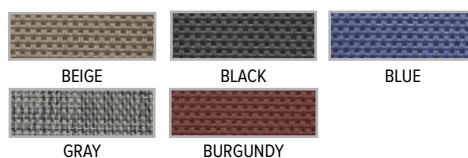


2 x 1 TEXTILENE
for outdoor usage

Feature Specs

| | |
|---------------------|-----------------------|
| ASSEMBLED SIZE | 23.5" x 34.5" x 25.8" |
| PACK | FOUR (4) |
| FRAME TYPE | STEEL |
| FRAME FINISH | BLACK COATING |
| SEAT TUBE DIAMETER | 22mm x 1.2mm |
| FABRIC | TEXTILENE (2:1) |
| FOLDED SIZE | 23.5" x 34.5" x 4.75" |
| WARRANTY | 60 DAYS |
| QUANTITY PER 40' HQ | 984 |
| FOB CHINA | \$ |
| FOB CA | \$ |

Colors Available



INFINITY

TEXTILENE TABLE

This portable table can be taken almost anywhere, completing your camping or patio set.



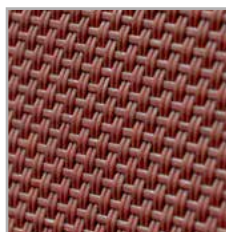
BUNGEE SUPPORT



FOLDS DOWN TO
2.5" THICK



FRONT



2 x 1 TEXTILENE
for outdoor usage

Feature Specs

| | |
|--------------------|-----------------------|
| ASSEMBLED SIZE | 24.8" x 34.7" x 33.1" |
| PACK | FOUR (4) |
| FRAME TYPE | STEEL |
| FRAME FINISH | BLACK COATING |
| SEAT TUBE DIAMETER | 22 mm x 0.8 mm |
| FABRIC | TEXTILENE (2 x 1) |
| FOLDED SIZE | 35.5" x 24" x 2.5" |
| CONTAINER | 1336 |
| WARRANTY | 60 DAYS |
| FOB CHINA | \$ |
| FOB CA | \$ |

Colors Available

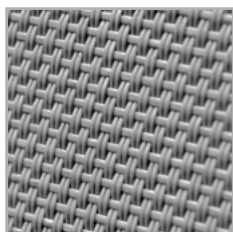


INFINITY SUN CHAIR

The Sun Chair provides consumers with a convenient and comfortable chair. With a breathable material that allows cool ventilation on warmer days, the sun chair is the perfect blend of comfort and portability



FOLDED VIEW



2 x 1 TEXTILENE
for outdoor usage



BUNGEE SUPPORT



Feature Specs

| | |
|---------------------|-----------------------|
| ASSEMBLED SIZE | 24.8" x 34.7" x 33.1" |
| PACK | FOUR (4) |
| FRAME TYPE | STEEL |
| FRAME FINISH | BLACK COATING |
| SEAT TUBE DIAMETER | 25 mm x 01 mm |
| FABRIC | TEXTILENE (2:1) |
| FOLDED SIZE | 47" x 23" x 6.9" |
| QUANTITY PER 40' HQ | 984 |
| FOB CHINA | \$ |
| FOB CA | \$ |

Colors Available



WHITE FRAME / BLUE TOP



BLACK FRAME / GREY TOP



WHITE FRAME / BURGUNDY TOP

COMPACT CHAIR

Featuring a durable steel frame that supports up to 300 lbs, the Compact Chair is comfortable, affordable, and light, making transporting a breeze.



MESH FOR VENTILATION



PADDED ARMRESTS



600D FABRIC



FOLDED DOWN

Feature Specs

| | |
|---------------------|-----------------------|
| ASSEMBLED SIZE | 16.5" x 25.6" x 21.7" |
| PACK | SIX (6) |
| FRAME TYPE | STEEL |
| SEAT TUBE DIAMETER | 19 mm x 0.9 mm |
| FABRIC | 600D OXFORD |
| FOLDED SIZE | 6" x 30" x 6.5" |
| WARRANTY | 60 DAYS |
| QUANTITY PER 40' HQ | 4850 |
| FOB CHINA | \$ |
| FOB US | \$ |

Colors Available



BLUE / BLACK MESH



LIME GREEN / BLACK MESH

Includes



CARRY BAG WITH SHOULDER STRAP

ELITE QUAD CHAIR

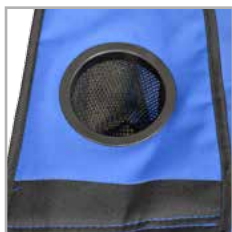
For consumers who seek premium quality and maximum relaxation, the Elite Quad Chair is perfect for a tailgate or any outdoor setting.



37 in.



MINI-COOLER
COMPARTMENT



CUP HOLDER



STORAGE POCKET



GREY STITCHING FOR
AESTHETICS



FOLDED DOWN

Feature Specs

| | |
|---------------------|---------------------|
| ASSEMBLED SIZE | 22.8" x 22.8" x 37" |
| FRAME MATERIAL | POWDER-COATED STEEL |
| TUBE DIAMETER | 19 mm x 0.9 mm |
| PADDING | 1 cm |
| FRAME FINISH | 600D PVC |
| WARRANTY | 60 DAYS |
| QUANTITY PER 40' HQ | 2880 |
| FOB CHINA | \$ |
| FOB CA | \$ |

Colors Available



CHERRY RED / BLACK



TRUE BLUE / BLACK



SOLID BLACK

Includes



CARRY BAG WITH SHOULDER STRAP

Stadium Seats

| | |
|---------------------|----------------------|
| MATERIAL TYPE | NBR |
| FOLDED SIZE | 18.2" x 22.6" x 3.5" |
| QUANTITY PER 40' HQ | 2,580 |
| PRODUCT WEIGHT | 5.7 LBS |
| QUANTITY PER CARTON | 8 |
| FOB CHINA | \$ |
| FOB CA | \$ |



Sports Cushion

| | |
|---------------------|-----------------------|
| MATERIAL TYPE | NBR |
| FOLDED SIZE | 15.7" x 11.8" x 0.75" |
| QUANTITY PER 40' HQ | 15,750 |
| PRODUCT WEIGHT | < 1 LB |
| QUANTITY PER CARTON | 9 |
| WARRANTY | 60 DAYS |
| FOB CHINA | \$ |
| FOB CA | \$ |



Side Table & Cup Holder Accessory

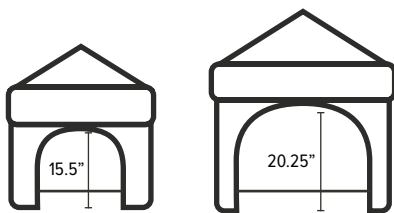
Featuring an easy to clip on and off side table for Zero Gravity Chairs. This unit features two cup holders, a device slot and a simple flat surface to place books, notepads and other items. It also has drain holes to eliminate any water build up.

| | |
|------------------|-----------------------------|
| COLOR | BLACK |
| WEIGHT | < 1.1 lbs |
| DIMENSIONS | 14.6" x 9.1" x 2.4" |
| SHIPPING OPTIONS | Mixed Containers / Dropship |
| FOB CHINA | \$ |
| FOB CA | \$ |





DISC FAN LIGHT



PupUp™ will provide shade and coverage for your dog, no matter where you are; Take to the beach, park, backyard or even set it up indoors. It's your dog's home away from home.

| SIZES | SMALL | LARGE |
|---------------------|----------------------|----------------------|
| ASSEMBLED SIZE | 25" x 25" x 32" | 42" x 42" x 51" |
| BOX DIMENSION | 7.3" x 7.3" x 23.6" | 7.3" x 7.3" x 26.7" |
| PRODUCT WEIGHT | 8.5 lbs | 12.8 lbs |
| FABRIC MATERIAL | 150 Denier Polyester | 150 Denier Polyester |
| FRAME MATERIAL | Powder-Coated Steel | Powder-Coated Steel |
| QUANTITY PER 40' HQ | 3200 | 2900 |
| FOB CHINA | \$ | \$ |
| FOB CA` | \$ | \$ |



UV
PROTECTION



FIRE
RETARDANT



WATER
RESISTANT



NO TOOLS
REQUIRED



LIGHT
WEIGHT



1 YEAR
WARRANTY



Disc Fan Light

Great for Camping, Hiking, or Any Outdoor Activity. The disc fan light provides more than 20,000 hours of working battery life. Expected battery life per charge is 24 hours. This unit features a built-in hook, to hang on virtually anything. There is also a built in usb charger for your mobile devices.

| | |
|------------------------|--------------------|
| COLOR | BLACK |
| UNITS PER CARTON | 5 |
| ASSEMBLED DIMENSIONS | 5" x 7.75" x 2.75" |
| RETAIL UNIT DIMENSIONS | 26.5 x 8 x 23 cm |
| BOX WEIGHT | 790g |
| WARRANTY | 60 DAYS |
| FOB CHINA | \$ |
| FOB CA | \$ |



3 LIGHT
SETTINGS



USB
CHARGER



2 FAN
SETTINGS



RECHARGEABLE
BATTERY



ACCESSORIES

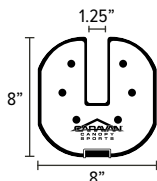
Instant Canopy Weight Plate - Set of 4

Universal fit. Works with 99% of all instant canopies.

- Set of 4 weights
- Individual weight of each: 6 lbs.
- 1 year limited warranty
- Coated for long term use and weather endurance



1 YEAR
WARRANTY



Works with...



STRAIGHT LEG



SLANT LEG



CANOPY SIDEWALL SETS



10x10

V-SERIES

12x12

V-SERIES 2

Features

- Set of 4 sidewalls
- 1 wall with middle zipper
- Insect protection
- 3 Solid Panels (Walls)
- Poly taffeta fabric
- 1 zippered entrance
- Fully enclosed for privacy



1 YEAR
WARRANTY



UV
PROTECTION



FIRE
RETARDANT



WATER
RESISTANT



V-SERIES 2
PRO

M-SERIES
PRO 2

Features

- Set of 4 sidewalls
- 1 wall with middle zipper
- Insect protection
- 3 Solid Panels (Walls)
- Poly taffeta fabric
- 1 zippered entrance
- Fully enclosed for privacy



1 YEAR
WARRANTY



UV
PROTECTION



FIRE
RETARDANT



WATER
RESISTANT



TITANSHADE™

ALUMASHADE™

Features

- Set of 4 sidewalls
- 1 wall with middle zipper
- Insect protection
- 3 Solid Panels (Walls)
- Poly taffeta fabric
- 1 zippered entrance
- Fully enclosed for privacy



1 YEAR
WARRANTY



UV
PROTECTION



FIRE
RETARDANT



WATER
RESISTANT

ACCESSORIES

Heavy Duty Anchor System

Universal fit. Works with 95% of all instant canopies.

- 1 year limited warranty
- Coated for long-term use and weather endurance
- Available in 6 or 8 piece sets



Full Sidewall Enclosure Kit



BOTH MODELS FEATURE AN
EASY ROLL UP FRONT WALL



The Domain® Carport full sidewall enclosure set by Caravan® Canopy Sports includes 1 front wall with dual zippers and roll up door (10'), 1 solid back wall (10'), and 2 solid sidewalls (20' each). It is made from durable polyethylene to keep your belongings safe and secure while also providing you needed privacy and protection from the elements.

The Caravan Mega Domain® Full Sidewall Enclosure Set is the perfect addition to your Caravan Mega Domain® Carport. The full sidewall kit provides additional shade and protection from the elements for you and your vehicles. The neutral tan color adds an appealing residential finish and matches with your current Mega Domain top. The Mega Domain Sidewall Set includes walls for both sides (20' each), the back (10'), and a front wall (10') with zippers to allow for easy vehicle entry.



60 DAY
WARRANTY



60 DAY
WARRANTY

2018



CONTACT US

Caravan® Global

Tel: (714) - 367 - 3000

Fax: (714) - 367 - 3050

Toll Free: (877) 922 - 6679

14600 Alondra Boulevard

La Mirada, CA 90638