



# CUSTOM GRAPHICS CATALOG



**STEP 01** Select Your Frame...

**STEP 02** Customize / Personalize

**STEP 03** Accessorize

## CARAVAN CANOPY



# About Caravan

Since 1999, Caravan International has been the premier developer and manufacturer of the highest quality outdoor shelters and accessories on the market. Caravan continues to support these products more than ever today with an unparalleled spirit that always puts our customer first. Our commitment to our customer is priority one and therefore our products will always reflect that. When you purchase a Caravan product you can be guaranteed that we have manufactured it to the highest standards behind a motivated and knowledgeable organization dedicated to being the best.

All Caravan products are uniquely engineered and constructed to deliver true protection from the outdoor environment. Our exclusive designs and patented features are engineered to promote smooth, easy operation, plus lasting strength and durability. Caravan also maintains a full-service custom graphics department that is capable of producing hundreds of available fabric color combinations, silkscreen printing, and digital color image reproduction.

Product features such as industrial grade materials, pull pin technology, safety minded design, multiple size functionality and custom graphics capabilities are what set Caravan apart from the competition.



## Screen Printing

The Caravan Direct Application Silkscreen System is the most common method of customizing your Instant Canopy. Years of experience have enabled our graphics team to produce end results that are dramatic and functional. Once your canopy has been customized with our silkscreen process you will have a marketing tool that will last for years. Custom Caravan Canopies are available in all sizes, with many custom colors to choose from.



**Screen printing examples on blue fabric. All fabric colors shown on pg. 5**



1-Color:  
Solid White



3-Color:  
Solid White, Black, Red



3-Colors:  
Solid White, Solid Red, Halftone Black

## Grand Format Dye Sublimation Printing

At over 93 inches of printable area, our state of the art dye sublimation printer is ready to tackle your biggest jobs. It's variable dot technology produces dots in three different sizes, creating smooth high resolution graphics without a grainy appearance. Its high-speed print head contains 180 nozzles x 8 lines, giving us the ability to deliver truly high quality print of 1440 DPI (high resolution artwork required).



## Digital printing examples



From Multiple Solid Colors...



Gradients & Shadows...



To Full-Color Photographs

# STEP 01 Select Your Frame...



## ALUMA®

- Commercial grade anodized aluminum frame
- Rust resistant smooth finish
- No tools needed for set-up
- Patented pull pin technology
- Multiple height settings
- Stakes and ropes included
- 2 year limited warranty
- Accessories available
- Available sizes: 5'x5', 8'x8', 10'x10', 10'x15', 10'x20'

## ALUMASHADE®

- Light-duty commercial grade powder coated aluminum frame
- Hammertone texture finish
- No tools needed for set-up
- Patented pull pin technology
- Multiple height settings
- Stakes and ropes included
- 2 year limited warranty
- Accessories available
- Available size: 10'x10'



## MONSTER®

- Industrial grade powder coated aluminum frame and brackets
- Highest quality frame on the market
- No tools needed for set-up
- Patented pull pin technology
- Multiple height settings
- Stakes and ropes included
- 2 year limited warranty
- Accessories available
- Available sizes: 10'x10', 10'x15', 10'x20', 12'x12', 14x14', 16'x16', 20'x20'



ready...



STEEL FRAME



# classic®

- Commercial grade powdered coated steel frame
- Hammertone textured finish
- No tools needed for set-up
- Patented pull pin technology
- Multiple height settings
- Stakes and ropes included
- 2 year limited warranty
- Accessories available
- Available sizes: 10'x10', 10'x15', 10'x20'

# DISPLAY SHADE®

- Light-duty commercial grade powder coated steel frame
- Hammertone textured finish
- No tools needed for set-up
- Patented pull pin technology
- Multiple height settings
- Stakes and ropes included
- 2 year limited warranty
- Accessories available
- Available sizes: 5'x5', 8'x8', 10'x10'



STEEL FRAME

**STEP  
02**

# Customize / Personalize

Caravan maintains a full service graphics department to help you turn your Caravan products into expressive graphic promotional tools. With the capabilities to produce hundreds of available fabric color combinations, silkscreen printing, and digital color image reproduction, Caravan custom graphics can take our canopy and your promotional identity and weave them into a first class exhibit.

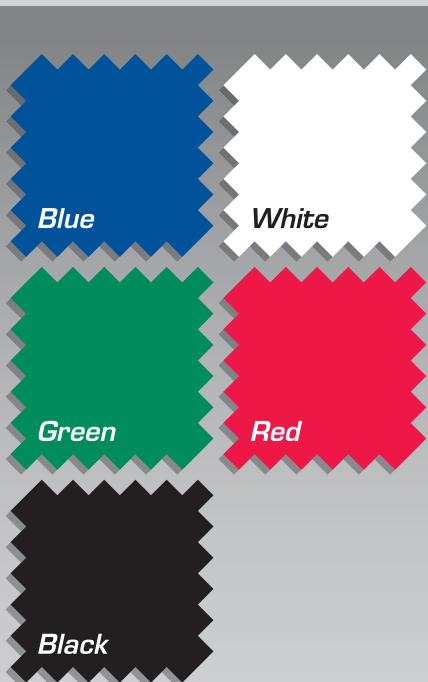


Large set-ups can be used to create something truly dynamic.

Using the same set-up in different locations will keep your costs down.

Mesh, Food Walls and Clear Vinyl can be integrated into you custom canopy.

## STANDARD COLORS



## CUSTOM COLORS



\* Colors are representative only and may not be exact.



### **SIDE WALLS**

One of the largest and most visible places for graphics.



### **SIDE RAILS**

Another great place to put graphics and keep an open feel.



### **VELCRO BANNERS**

Create a top with simple and easy to change valance.



### **VALANCE HEADBANDS**

The most cost effective way to add graphics to a canopy top you already have.



### **TABLE COVERS**

Turn a standard table into an advertising display.



### **RAIN GUTTERS**

Provide more protection from inclement weather.

# STEP 03 Accessorize

To enhance your experience with your Caravan Canopy, optional accessories are available.

Provide an instant visibility from a far away distance. Perfect for outdoor corporate events, demos or trade shows.



### Banner Flag

Available in: 12' • 15' • 18'

### Canopy

Available in: 5' x 5' • 8' x 8' • 8' x 12' • 10' x 10' • 10' x 15' • 10' x 20' • 12' x 12' • 14' x 14' • 16' x 16' • 20' x 20'

### Sky Flags\*

Available in: 2.5' x 10'

\*Flagpole length is 8', extends up to 22'



[www.CARAVANCANOPY.com](http://www.CARAVANCANOPY.com)

[www.CARAVANCANOPY.com](http://www.CARAVANCANOPY.com)

### Back/Side Walls

Available in: 5' • 8' • 10' • 15' • 20'

### Side Rails

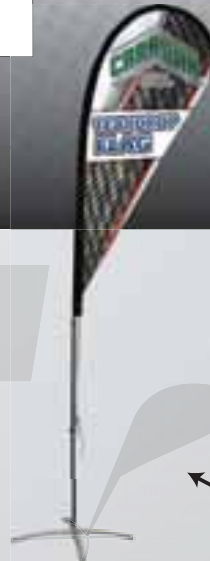
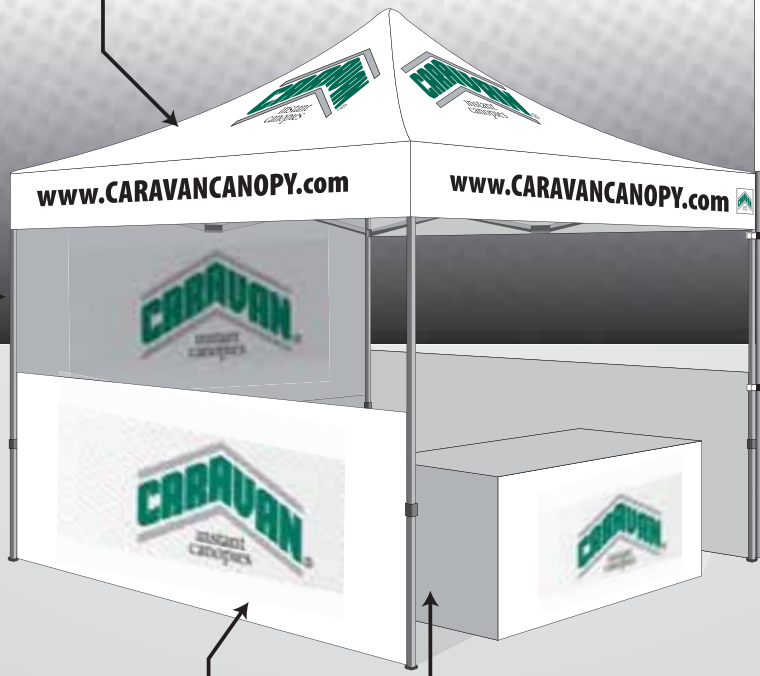
Available in: 5' • 8' • 10' • 15' • 20'

### Table Covers

Available in: 4' • 6' • 8'

### Tear Drop Flag

Available in: 10' • 12' • 14'



# Caravan Canopy Questionnaire

Fax to 714-367-3050

or scan and e-mail to info@caravancanopy.com

To help begin the order process for Custom Items, we would like to get as much information regarding the job as possible.

Name of person ordering Custom Items: \_\_\_\_\_

Company Name: \_\_\_\_\_

Direct Phone Number ( ) \_\_\_\_\_

E-mail Address: \_\_\_\_\_

Billing Address \_\_\_\_\_  
 \_\_\_\_\_  
 \_\_\_\_\_

Shipping Address or [ ] Same as Billing Address \_\_\_\_\_  
 \_\_\_\_\_  
 \_\_\_\_\_

Date you are looking to have this job arrive at the Shipping Address? \_\_\_\_\_

Do you have a budget for this order? \$ \_\_\_\_\_

What types of frames do you need and in what size?

**Monster**  
 (Industrial Grade  
 Aluminum)

**Aluma**  
 (Commercial Grade  
 Aluminum)

**Classic**  
 (Commercial Grade  
 Steel)

**DisplayShade**  
 (Light Duty  
 Commercial Grade Steel)

**Alumashade**  
 (Light Duty Commercial Grade  
 Aluminum)

Qty.	Size
___	10x10
___	10x15
___	10x20
___	12x12
___	14x14
___	16x16
___	20x20

Qty.	Size
___	5x5
___	8x8
___	10x10
___	10x15
___	10x20

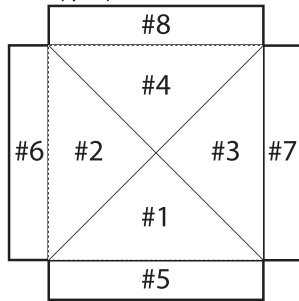
Qty.	Size
___	10x10
___	10x15
___	10x20

Qty.	Size
___	5x5
___	8x8
___	10x10

Qty.	Size
___	10x10

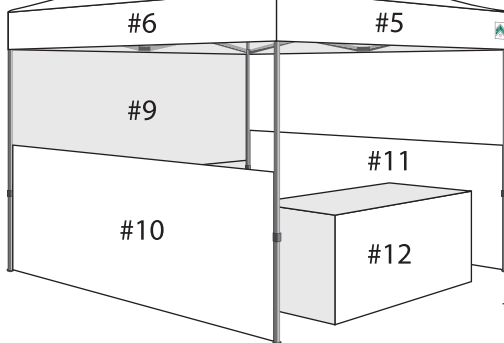
## Canopy Color & Logo Layout

\*Canopy Top View



Location	Fabric Color	Logo #		Fabric Color	Logo #
#1			#7		
#2			#8		
#3			#9		
#4			#10		
#5			#11		
#6			#12		

\*Canopy Perspective View



## Logo Description

	Screen	Digital	# of colors
1.			
2.			
3.			
4.			
5.			

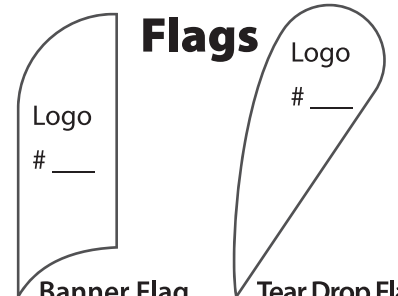
\*Please send Vector (.ai or .eps files) or High Resolution Logos to info@caravancanopy.com with Company Name as the subject line.

## Banners



Logo # \_\_\_\_\_  
 Size: width \_\_\_ X height \_\_\_  
 Qty. \_\_\_\_\_

## Flags

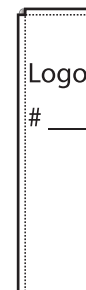


	Banner Flag			Tear Drop Flag			
Size	12'	15'	18"	Size	10'	12'	14'
Qty				Qty			

## Accessories:

Roller Bags:	Size	10'	15'	20"
Qty.				

**Weight Bags:**  
 Qty. \_\_\_\_\_ (sets of 4)



**Sky Flag**  
 30" x 120", sold in set of 2  
 Qty: \_\_\_\_\_



**COMMERCIAL ROLLER BAG**

Available for 10'x10', 10'x15', and 10'x20' frames



**CORNER CURTAINS**

Sold in sets of 2



**LEG EXTENSIONS**

Sold in sets of 4



**WEIGHT BAG**

Sold in sets of 4



**COMMERCIAL STAKE KIT**

Sold in sets of 4



**14600 Alondra Blvd.  
La Mirada, CA 90638  
877-9-CANOPY • 714-367-3000  
Fax 714-367-3050  
[www.caravancanopy.com](http://www.caravancanopy.com)**

Since 1999, Caravan International has been the premier developer and manufacturer of the highest quality outdoor shelters and accessories on the market.

Caravan continues to support these products more than ever today with an unparalleled spirit that always puts our customers first. Our commitment to our customer is priority one and therefore our products will always reflect that.

When you purchase a Caravan product you can be guaranteed that we have manufactured it to the highest standards behind a motivated and knowledgeable organization dedicated to being the best.

Copyright © 2011 Caravan® Int'l. Inc.  
All Rights Reserved

